

Galaxy evolution discussion circle

Practical organisation

- Started January 25
- Meet every week (few were canceled)
- Monday at 11am in the Mistral room
- 45 people subscribed to the list mailto:sympa@lam.fr?subject=sub%20geco_galev%20
- ~10-15 persons participate every week



*The gecko trip of last week
with a big beast in the back*

Content

scientific contour:

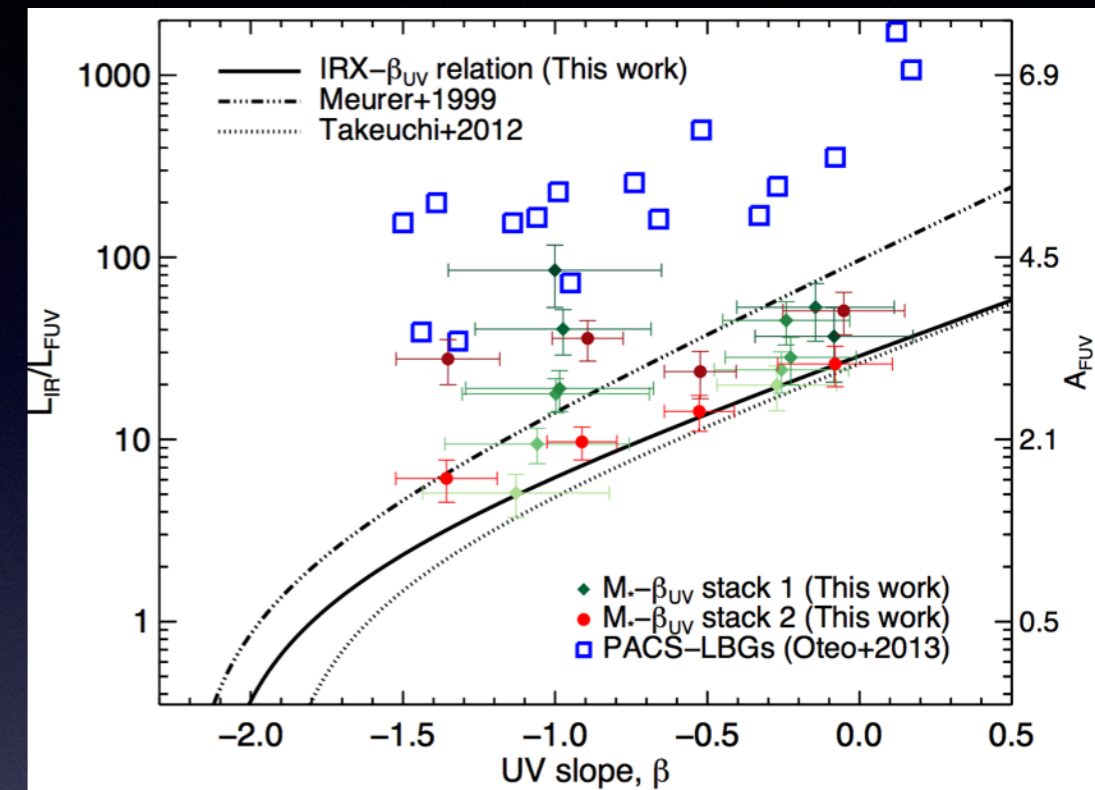
as long as the goal is to understand the galaxy evolution and formation, it could be discussed in this circle.

Format:

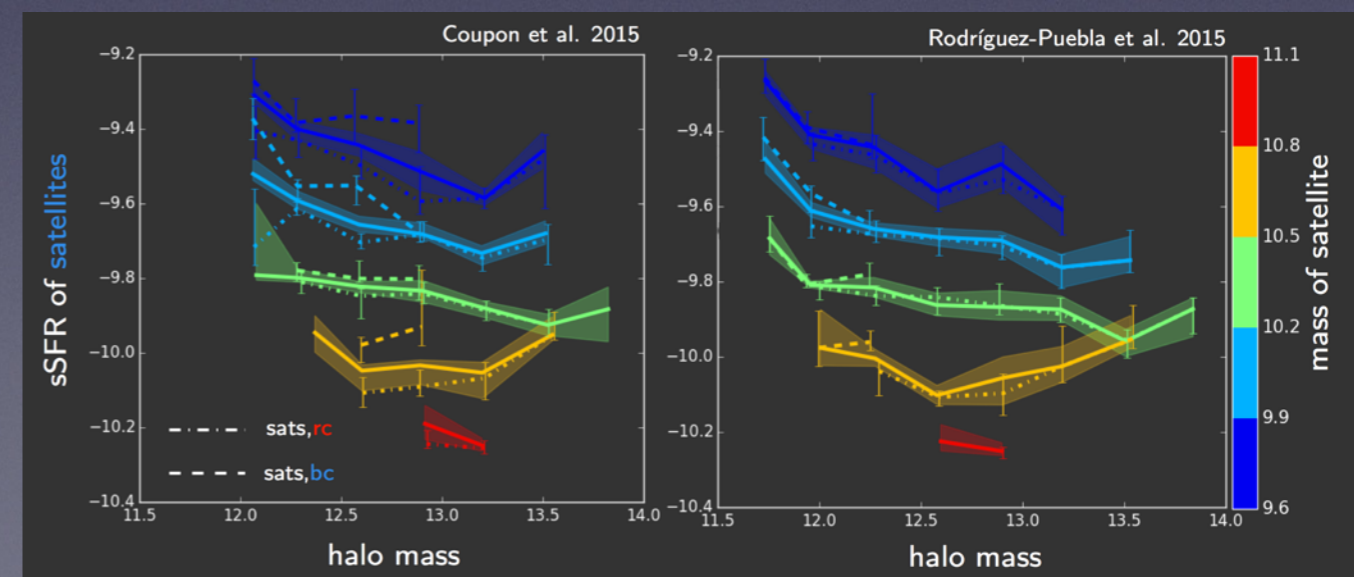
- astro-ph: at minimum, one paper has always been discussed. Often two. Could be a recent one or an old paper.
- one plot: someone presents one or few figures from its own work (or collaborators) and we discuss it. It provides feedback and trigger useful scientific discussion between us. No need to prepare anything.
- one topic: extensive discussion on one topic, technical (e.g. SED fitting, reconstruction of the cosmic web, ...) or scientific (e.g. SFR, primordial galaxies, ...) ➤ we never did it

Example of the works which have been discussed

- Several figures related to dust attenuation by Barbara, Véronique, Javier

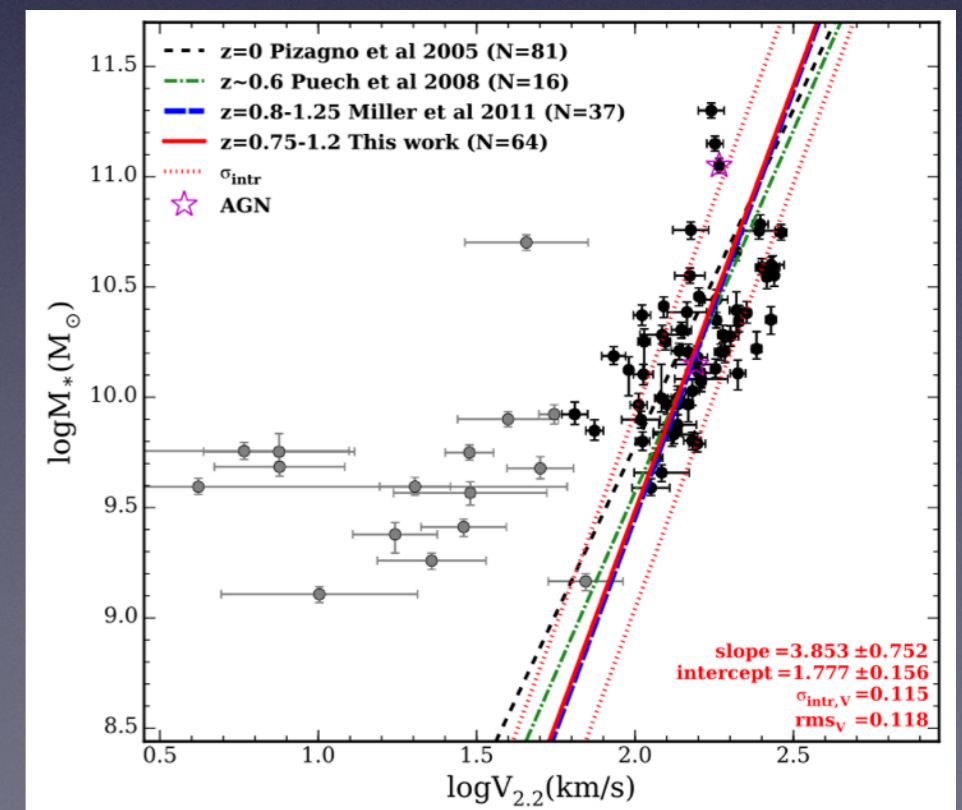
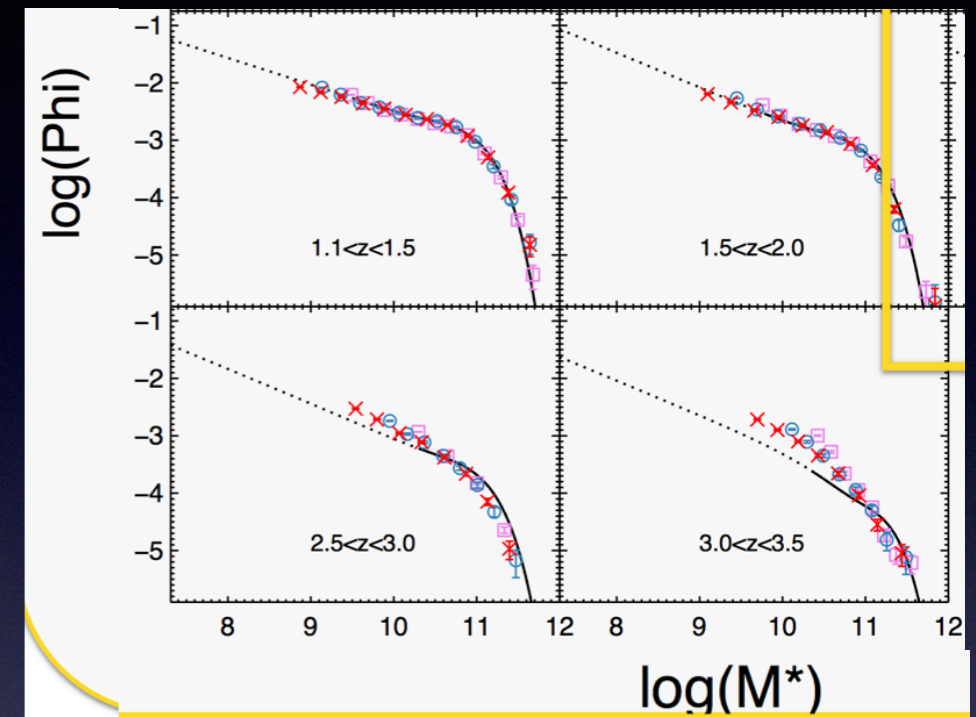


- Link galaxy properties and environment by Marie and Katarina



Example of the works which have been discussed

- Stellar mass functions by Iary and Nicola
- Some vanishing AGN by Isabelle
- Work on the Tully-Fischer relation by Deborah
- Presentation of Flare by Denis



Example of the works which have been discussed

Astro-ph

around the same topics as the ones seen for the « one plot » presentations (galaxies at high redshifts, statistical analysis, few detailed studies of galaxies, AGN feedback)

My personal impressions

- « one plot » is quite interesting and dynamic;
- « astro-ph » is often a bit too detailed;

It would be great having more people coming and/or presenting something

- it would force us to shorten a bit astro-ph
- we will have more variety in the topics
- need people to be more pro-active